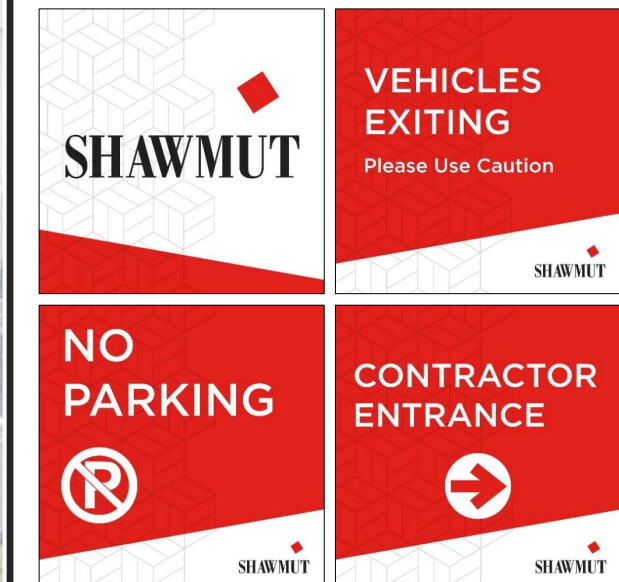
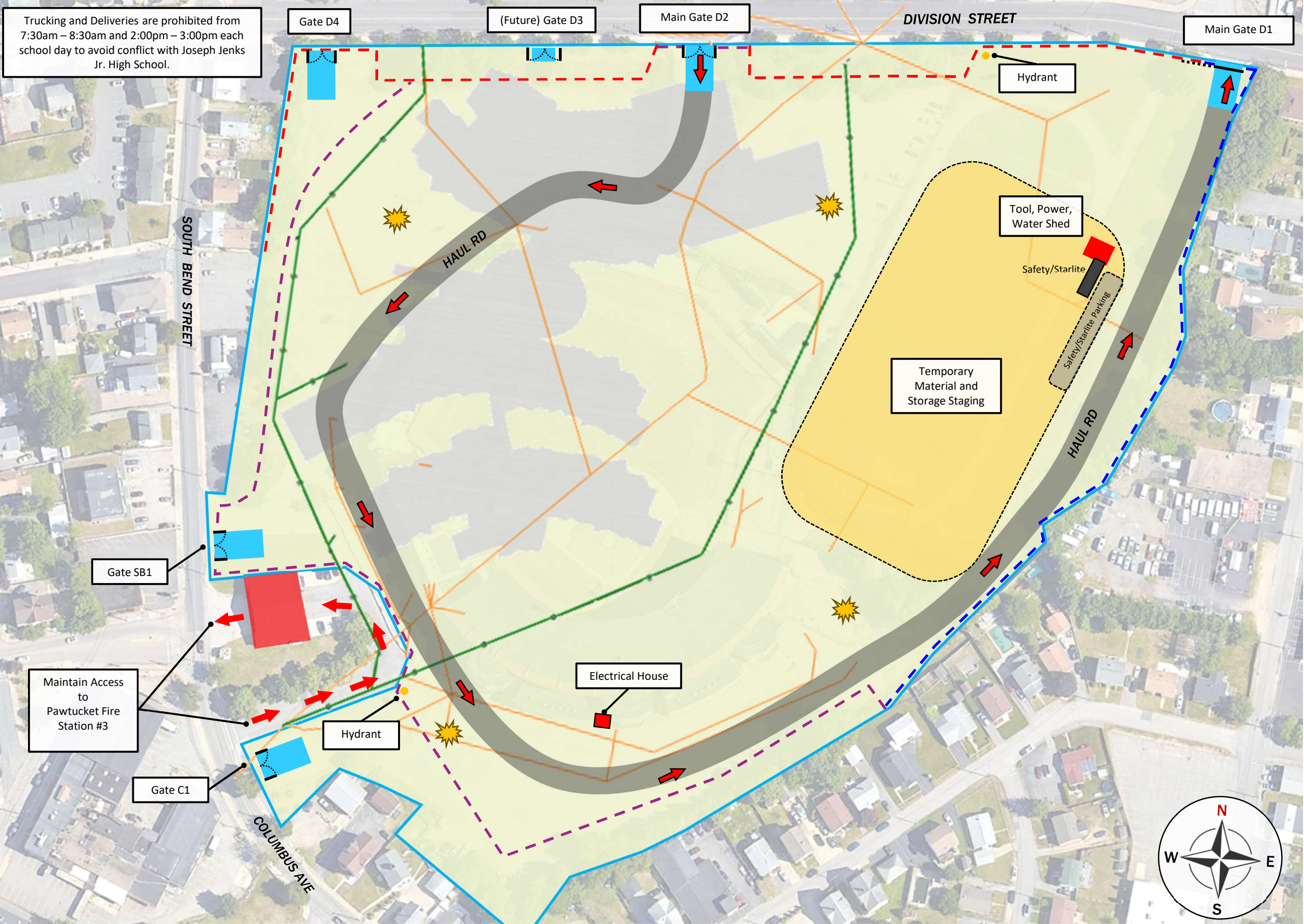


Logistics Plan: ERP 1a | Site Enabling, Demolition, Early Utility Work | February 2025 – April 2025



PAWTUCKET HIGH SCHOOL PROJECT

Logistics Plan: ERP 1b | Demolition Demobilization and Utility Construction | April 2025 – June 2025



- Property Line
- Existing Fence
- Temp Fence Panels (no scrim)
- New Pounded Fence
- New Scrim
- Traffic Flow
- Swing Gate Access w/ Control Mat
- Sliding Gate Access w/ Control Mat
- Dumpster / Recycling
- Trade Storage Boxes
- SDC Site Offices
- Mobile Light Stand / 120v Power

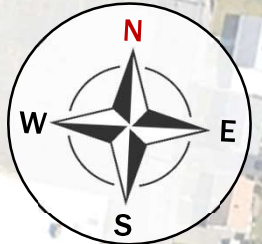
Shawmut Site Signage:



VEHICLES EXITING
Please Use Caution

NO PARKING

CONTRACTOR ENTRANCE



PAWTUCKET HIGH SCHOOL PROJECT

Logistics Plan: ERP 2 | Ground Improvements, Foundation Site Work, Utilities | June 2025 – December 2025



- Property Line
- Existing Fence
- Temp Fence Panels (no scrim)
- New Pounded Fence
- New Scrim
- Traffic Flow
- Swing Gate Access w/ Control Mat
- Sliding Gate Access w/ Control Mat
- Dumpster / Recycling
- Trade Storage Boxes
- SDC Site Offices
- Mobile Light Stand / 120v Power

Shawmut Site Signage:



PAWTUCKET HIGH SCHOOL PROJECT

Logistics Plan: ERP 3 | Foundations | January 2026 – May 2026



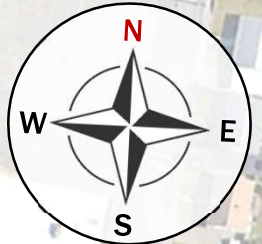
- Property Line
- Existing Fence
- Temp Fence Panels (no scrim)
- New Pounded Fence
- New Scrim
- Traffic Flow
- Swing Gate Access w/ Control Mat
- Sliding Gate Access w/ Control Mat
- Dumpster / Recycling
- Trade Storage Boxes
- SDC Site Offices
- Mobile Light Stand / 120v Power

Shawmut Site Signage:

VEHICLES EXITING
Please Use Caution

NO PARKING

CONTRACTOR ENTRANCE



PAWTUCKET HIGH SCHOOL PROJECT

Logistics Plan: ERP 4 | Super Structure | June 2026 – December 2026



- Property Line
- Existing Fence
- Temp Fence Panels (no scrim)
- New Pounded Fence
- New Scrim
- Traffic Flow
- Swing Gate Access w/ Control Mat
- Sliding Gate Access w/ Control Mat
- Dumpster / Recycling
- Trade Storage Boxes
- SDC Site Offices
- Mobile Light Stand / 120v Power

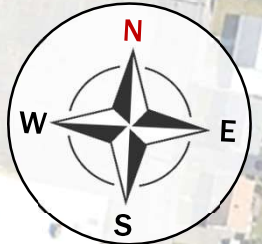
Shawmut Site Signage:

VEHICLES EXITING

Please Use Caution

NO PARKING

CONTRACTOR ENTRANCE



PAWTUCKET HIGH SCHOOL PROJECT

Logistics Plan: GMP | Exterior and Interior Construction | January 2027 – August 2027



- Property Line
- Existing Fence
- Temp Fence Panels (no scrim)
- New Pounded Fence
- New Scrim
- Traffic Flow
- Swing Gate Access w/ Control Mat
- Sliding Gate Access w/ Control Mat
- Dumpster / Recycling
- Trade Storage Boxes
- SDC Site Offices
- Mobile Light Stand
- Leave Out (Trash, Access, Heat, etc.)

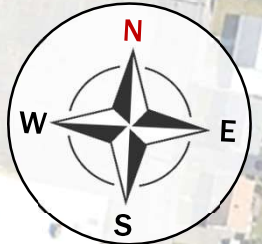
Shawmut Site Signage:



VEHICLES EXITING
Please Use Caution

NO PARKING

CONTRACTOR ENTRANCE



PAWTUCKET HIGH SCHOOL PROJECT

Logistics Plan: GMP | Exterior, Interior, Field Construction | August 2027 – May 2028



Trucking and Deliveries are prohibited from 7:30am – 8:30am and 2:00pm – 3:00pm each school day to avoid conflict with Joseph Jenks Jr. High School.

- Property Line
- Existing Fence
- Temp Fence Panels (no scrim)
- New Pounded Fence
- New Scrim
- Traffic Flow
- Swing Gate Access w/ Control Mat
- Sliding Gate Access w/ Control Mat
- Dumpster / Recycling
- Trade Storage Boxes
- SDC Site Offices
- Mobile Light Stand
- Leave Out (Trash, Access, Heat, etc.)

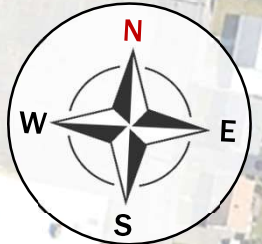
Shawmut Site Signage:



VEHICLES EXITING
Please Use Caution

NO PARKING

CONTRACTOR ENTRANCE



PAWTUCKET HIGH SCHOOL PROJECT

Logistics Plan: GMP | Close Out and Final Landscaping | May 2028 – November 3, 2028



Shawmut Site Signage:



VEHICLES EXITING
Please Use Caution



NO PARKING



CONTRACTOR ENTRANCE





PAWTUCKET HIGH SCHOOL PROJECT

Logistics Plan: GMP | Close Out and Final Landscaping | May 2028 – November 3, 2028

